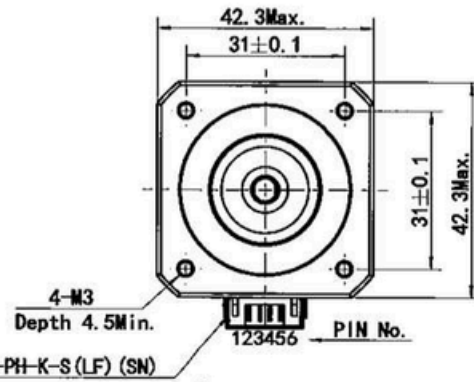
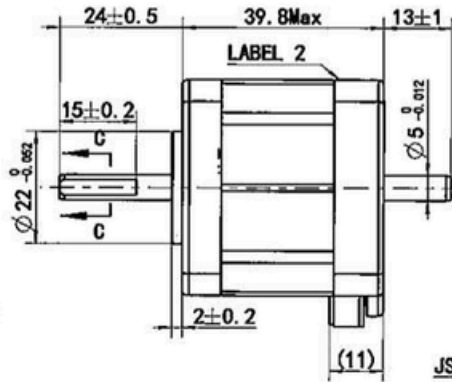
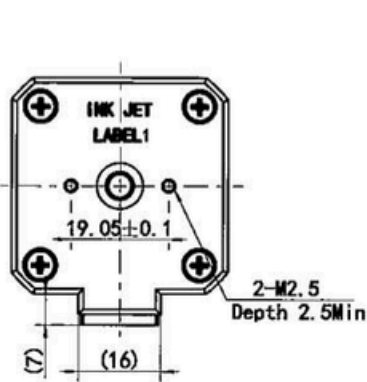
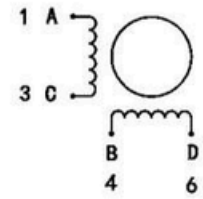


MS17HD2P4100-M



Wiring Diagram

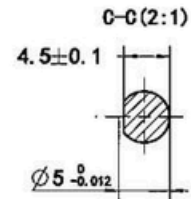


Exciting Sequence vs. Direction of Rotation

| STEP | A | B | C | D |       |
|------|---|---|---|---|-------|
| 1    | + | + | - | - | CCW ↑ |
| 2    | - | + | + | - |       |
| 3    | - | - | + | + |       |
| 4    | + | - | - | + |       |

Clockwise view from mounting side

| Specification        |                                           |
|----------------------|-------------------------------------------|
| 1. Number of Phase   | 2                                         |
| 2. Step Angle        | 1.8°                                      |
| 3. Rated Voltage     | 3.9 V DC                                  |
| 4. Rated Current     | 1 Amp                                     |
| 5. Holding Torque    | 0.48 Nm Typ. (Two phase on/rated current) |
| 6. Phase Resistance  | 3.9 ohm ±10% (20°C)                       |
| 7. Phase Inductance  | 8.9 mH ±20%(1kHz 1V rms)                  |
| 8. Rotor Inertia     | 57 gcm <sup>2</sup>                       |
| 9. Motor Weight      | 0.28 kg                                   |
| 10. Insulation Class | B (130°C)                                 |



Label 2 Detail

MOONS' STEPPING MOTOR  
 Insulation: Class B, 60VDC Max.  
 1Amps Holding: 0.48Nm  
 3000RPM Max. **CPIUS**  
 UL FILE No. E465363 XXX Factory ID  
 工厂代码

Label 1 Detail

TYPE MS17HD2P4100-M  
 XXXXXXXX YY/MM/DD  
 Work Order Date Format

|      |                   |                                                                                                                    |                            |       |           |      |                           |                                 |
|------|-------------------|--------------------------------------------------------------------------------------------------------------------|----------------------------|-------|-----------|------|---------------------------|---------------------------------|
|      |                   | Unit:mm                                                                                                            | Approve                    |       |           |      |                           |                                 |
|      |                   | First angle method                                                                                                 | Standardize                |       |           |      |                           |                                 |
|      |                   | Tolerances for linear and angular dimensions without individual tolerance indications GB/T 1804-n eqv ISO 2768-1:m | Process Review             |       |           |      |                           |                                 |
|      |                   | Geometrical tolerance for features without individual tolerance indications GB/T 1184-K eqv ISO 2768-2:K           | Check                      |       |           |      |                           |                                 |
|      |                   |                                                                                                                    | Design                     |       |           |      |                           |                                 |
| A1   | EGR23-317         | 2023.03.24                                                                                                         |                            |       |           |      |                           |                                 |
| A0   | Original revision | 2017.09.19                                                                                                         |                            |       |           |      |                           |                                 |
| REV. | REVISION RECORD   | DATE                                                                                                               | UNLESS OTHERWISE SPECIFIED | NAMES | SIGNATURE | DATE | Drawing No: 4611110027536 | Rev. A1 SCALE: 1:1 Sheet 1 of 1 |

